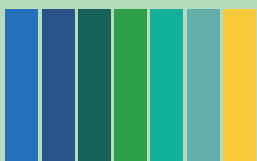




# 2024 ITTF PARTICIPATION PROGRAM







# Dear ITTF Member Associations,

Entering the fourth year of the ITTF **Participation Program**, we are looking forward to continuing the exciting journey of developing our beloved Table Tennis sport around the world.

Offering a wide range of opportunities and programs, we shall continue to put your association and your defined needs at the center of attention. Dedicated ITTF staff – with accumulated knowledge and experience will guide you in terms of the different support initiatives arising from both the ITTF designed programs and the actual and urgent needs in your country.

Our understanding is that strong and vibrant member associations always will be the center piece of an international sports federation. Only together can we achieve greatness and push boundaries. We are here to empower you.

In 2024, the following areas should be our joint priority:

- Youth Development – extended to involve initiatives to embrace talent identification.
- National Team Programs and Coaches development. Pride and honor!
- National Championships and event structures. Expect us to be watching!
- Full focus on Education. Added support structure will come into effect.

Driven by our overarching mantra: Table Tennis for all for life, we will continue to drive forward with our rotation incentives connected to the ITTF Participation Program. In this regard, I would like to recommend a quick and open discussions with our staff in order to unlock the many opportunities lined up in the Olympic Year 2024.

In brief summary: Lets join forces. Let us work together. Let us create a better future for our sport!

With the future in mind,

**Mikael Andersson**

ITTF Sports Development Director



# 01

## **Aim, objectives and benefits**

**The ITTF Participation Program has been set up with the ambition to support the overall development and growth of Table Tennis globally, at all levels and in all areas. It focuses on providing opportunities, incentives and a universal type of support to each and every Member Association, which is very customisable based on their needs and realities.**

The aim of the Program is to support strategic Member Association development projects addressing especially the following areas:

- Supporting youth development by enhancing skills and competences of young talented players,
- Upskilling and empowerment of top National Team players and coaches,
- Supporting the organisation and/or promotion of relevant national events,
- Promotion and activation of school programs,
- Provision of educational tools,
- Sport For All.



**Key areas of **benefits** to Member Associations include:**

- **Development planning** – the ITTF Online Services represent a precious added value to a Member Association’s development pathway.
- **Diversity** – ITTF Participation offers diversified programs to Member Associations to better serve their development needs.
- **Choice** – Member Associations can choose activities in accordance with their development needs.
- **Regional cooperation** – Member Associations can join forces to maximise the benefits by organizing group Regional activities.
- **Inclusion** – ITTF supports equal opportunities for all and fosters a culture where everyone can get engaged and feel valued.
- **Continuity** – continuous development of our programs aims at sustainability to ensure future success.

**“In its fourth year, the Participation Program continues to empower ITTF Member Associations to reach their full potential and fuel motivation to soar to new heights. During these years we have built a solid ground for our close cooperation and have achieved significant results through a variety of development programs and services. Our ITTF Participation team, experts and partners are ready to share new insights and best practices and develop strategies for further professionalism and growth together.”**

**Yelena Druzhkova - ITTF Head of Development Programmes**



# 02

## **MA Services and Activities**

**As part of the ITTF 2021-2024 Development Plan every Member Association (MA) will benefit from one initiative annually in the three years. The allocation of the three rotating initiatives is based on rotation, MA category, pro-activity principles and responsiveness.**

**“The ITTF Participation Program offers a wide range of opportunities for Member Associations to access quality support covering areas of importance for each and everyone in need for an extra push. The ITTF sports and development team stands more than ready to open discussions and evaluate ideas on how to develop the sport of Table Tennis from the ground and up. We are expecting full speed from the get go in 2024 . To have the yearly planning nailed down as soon as possible will help us to deliver the goods with the best possible accuracy.”**

**Mikael Andersson - ITTF Sports Development Director**



**MA  
Activity**



**National  
Projects**



**ITTF Online  
Services**

**(Co-)funding onsite activities conducted by the ITTF Experts and organized jointly with the MAs:**

- National Hopes Week & Challenge
- Training Camp (Cat. 1 and 2 are eligible for Youth camps only)
- Para Table Tennis Training Camp
- DMA Activity (Cat. 3 and compulsory for Cat. 4)
- ITTF Coach Education:
  - ITTF-PTT L1 (Cat. 3 and 4)
  - ITTF L2 and L3 (all Cats.)
- ITTF Match Officials Education:
  - Basic (Cat. 3 and 4)
  - National (Cat. 1 and 2)
- Women's Activity
- Other activities as per prior agreement with ITTF Participation

**(Co-)funding relevant and meaningful national projects organized by the MAs:**

- national activities/events, for instance National Team training camps (Cat. 1 and 2 are eligible for Youth camps only) or National Championships;
- national strategic and development projects, for instance school programs, educational activities, women's development;
- table tennis equipment up to 30% of the total national project support if only activities/events will be organized;
- (co-)finance staff related expenses up to 50% of the total national project support, eg. national team coach salary, technical staff such as development officers, competition managers, etc. (Cat. 3 and 4 only)
- access StreetTT programs
- access Stupa "Analyse & Rise" (Premium subscription) and "Stupa Events"\*
- WTTD events up to US\$1,000 of the total national project' support
- other initiatives upon MA request and/or a combination of the above

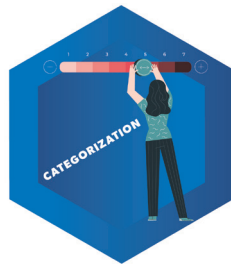
**ITTF Online Services to be consumed according to the ITTF Categorization for up to 10 hours from the menu offered by the ITTF Development Team and delivered via the ITTF Extranet:**

- Achieving Gender Balance in Table Tennis
- Coach-the-Coach
- Competition Management
- Creating MA Development Plans
- Creating National Team Plans
- Event Delivery
- Good Governance
- Integrity
- ITTF MA Categorization
- PTT Integration Guide
- Remote DMA Activity
- Remote Training Camp
- Sustainability
- Talent Identification
- 2021-2024 OS Programs & Guidelines

**\*provided by Stupa Sports Analytics**

In addition to the above ITTF has secured in cooperation with its partner, Stupa Sports Analytics, an MA customised "Analyse & Rise" package (standard subscription) of Artificial Intelligence based performance analysis for up to 50 national players for the duration of 6 months, which is applicable for able-bodied and para players.

# Key Points:



ITTF Online Services are available to Member Associations as per their corresponding category within the ITTF MA Categorization.



Any activity/service can be targeting either able-bodied Table Tennis or Para Table Tennis or feature combined projects/activities/events.



Each Member Association should ensure 35% female participation in every group activity of the ITTF Online Services/National Activities/Partner services. If 35% are not reached, the full ITTF contribution for an incentive is not guaranteed.





Not more than 50% of the total national project support will be approved for MA staff related expenses (Category 3 and 4 only).



It is also possible for Member Associations to 'share' a specific consultancy service and/or fund a joint activity (e.g. Regional Training Camp). Upon request or on ITTF initiative (following a confirmation from concerned MAs) some services may be organised as group activities, for instance in a specific language.

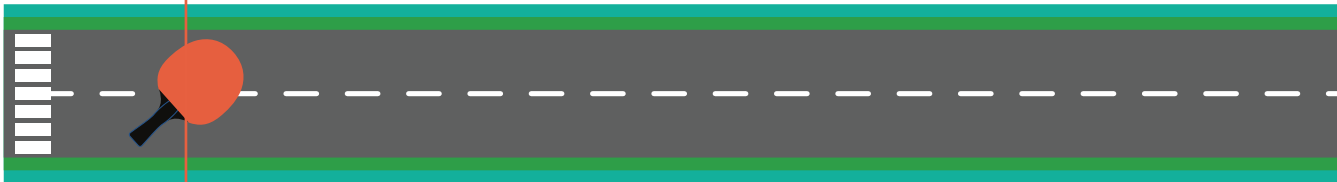
# 03

## Program Phases

PHASE  
1

Activation  
procedure

- ▶ Each ITTF Member Association that is in good standing with the annual payment of its membership fees will need to complete the Member Association Development Questionnaire to benefit from the Program.
- ▶ Member Associations need to complete the Activity Plan form, in which they indicate how they wish to proceed with an activity they are eligible for in a particular year.
- ▶ ITTF Participation reviews the Activity Plan, gives the endorsement, and informs the Member Associations accordingly.



## PHASE 2

### Implementation

- ▶ Once the MA Activity Plan is endorsed, Member Associations can start with the implementation.
- ▶ It is recommended that Member Associations start the ITTF Online bookings without possible delays to assure the online services are planned in advance.
- ▶ Member Associations are responsible for organizing National Projects and can be assisted by the Continental Participation Officers where needed.  
**Note: additional services outside the scope of the Participation Program must be agreed and paid for directly with our partners.**
- ▶ When organizing an MA Activity, Member Associations need to follow ITTF Expert's recommendations and the specific requirements.

## PHASE 3

### Reporting

- ▶ Once all the services and activities are completed, Member Associations will need to:
- ▶ For National Projects and Member Association Activities:
  - submit the Activity Report with the attached invoice and receipts,
  - provide all the necessary requested materials (information for the article, photos, videos, etc).
- ▶ For ITTF Online Services:
  - fill in and submit the Service Feedback Form.

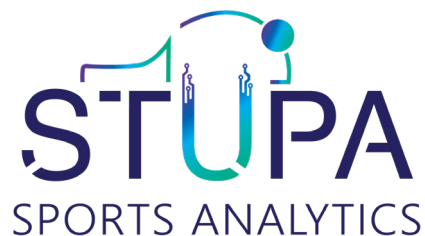


# 04

## **Our Program Partners**

The program implementation is managed by the ITTF Participation Unit in close cooperation with other Development Units and the ITTF Member Relations Department.

---



**Stupa Sports Analytics is a global sports analytics company, driven by love for Table Tennis.**

Stupa has developed an end-to-end scalable and aggregated platform that integrates performance analytics for athletes, a digitized event management system for federations, OTT for fans, and content/live streaming for betting and media platforms, presenting numerous avenues for monetization. In addition, Stupa’s AI-powered video analytics solution is accessible to national federations and broadcasters, enhancing the viewing experience for fans and followers. Furthermore, the platform includes features for media fan engagement, contributing to the elevation of a federation’s structure and the promotion of the sport on a broader scale.



**StreetTT – the Table Tennis app**

<p><b>Find players and events</b> put any TT event on the map</p>	<p><b>Submit match results by QR</b> scan the code of any player</p>
<p><b>Rank by table, city, country, world</b> real time player Elo rating</p>	<p><b>Player profile, stats and levels</b> record TT achievements</p>

Use the free StreetTT app to record match results from any event - players receive a player Elo rating, a local, national and global live ranking and player profile with statistics and levels.

Announcing prizes from StreetTT partners for 1st, 2nd and 3rd place, Men’s and Women’s rankings in 2024. Lookout for prizes in your city, country, university and company.

Visit [www.streett.com](http://www.streett.com)

# Participation Program Team



**Yelena Druzhkova**  
Head of Development  
Programmes



**Mohammad Atoum**  
Development Programmes  
Manager



**Ramzi B. H. Mabrouk**  
Senior Participation Officer



**Kealeboga Keitseng**  
Africa Participation  
Officer



**Paul Tiendrebeogo**  
Africa Participation  
Officer



**Luisana Perez**  
Americas Participation  
Officer



**Carlos Esnard**  
Americas Participation  
Officer



**Trevor Hirth**  
Asia Pacific  
Participation Officer



ITTF Participation program contact:  
[HPDParticipation@ittf.com](mailto:HPDParticipation@ittf.com)